



**KITCHEN | WARDROBE | BATHROOM**



- + KITCHEN SOLUTIONS
- WARDROBE SOLUTIONS
- SMART FURNITURE SOLUTIONS
- WOODEN DOOR SOLUTIONS

**GERMAN TECHNOLOGY + INNOVATIVE DESIGN**

**Volume - 02**



SHREE RAM INTERNATIONALS

MAP DIRECTION



## About Us

Welcome to the Business Organization of "SR" to hold your vision and thoughts Established in 2012. "SR" is driven by the commitment to deliver quality products and wide range of furniture fittings for homes offices and Resorts Etc. Shree Ram Internationals is a decorative Hardware Enterprises Integrating Development. Marketing and Services. And our only motto is to satisfy our customers with best quality product range at a very reasonable price

"SR" are not only statement of style by its look but they are benchmark of quality as well

Our mission is to accomplish our goods every time and establish a sense of trust in the minds of the people. As a company we understand that we have to attain customer satisfaction by proving then with exclusive service in every department Our team if skilled professionals work in close co-ordination with clients to meet their exact demands with in time frame we have achieved the reputed position in the industry due to our clients-centric approach easy payment option transparent dealing and timely delivery

We thank all our customers for selecting our products & fulfill their lavish life style.

SATISFACTION

SERVICE

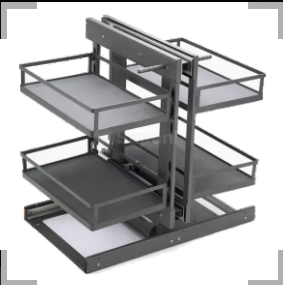
QUALITY

PROFESIONAL

Way to Success...



5 to 7  
Kitchen Pantry  
& Tall Unit



8 to 9  
Kitchen Corners



10 to 11  
Rolling Shutter



12 to 13  
Pullout & Upper  
Cabinet Accessories



14 to 17  
Inlets & Accessories



18 to 22  
Tandem Box, Slim Box  
Wire Quadro &  
Inner Drawers

Your Dreams Just a Swipe Away!

**KITCHEN | WARDROBE | BATHROOM**

KITCHEN SOLUTIONS

WARDROBE SOLUTIONS

SMART FURNITURE SOLUTIONS

WOODEN DOOR SOLUTIONS



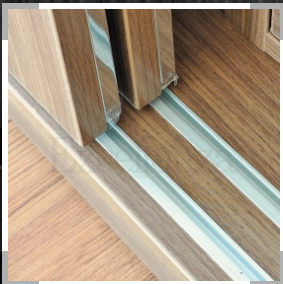
23 to 27  
Hinges & Telescopic  
Channel



28 to 32  
Space Saving  
Furniture Accessories



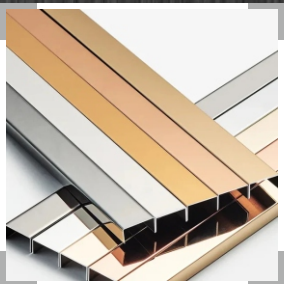
33 to 36  
Wardrobe  
Accessories



37 to 39  
Sliding Tracks  
& Wheels



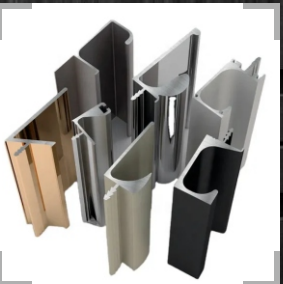
40 to 41  
Ladders



42  
Stainless Steel  
Inlay



43 to 45  
Screw



46 to 55  
Kitchen & Wardrobe  
Aluminum Profiles



fdpu vkidh

ftEEnkjh gekjh



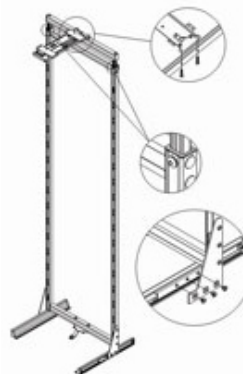
**All Kind of Accessories  
Spare Parts are Also Available**

**Always AIM to Win the Heart of Our Customer  
with Top of the Line Performance**



**SATIN PANTRY**

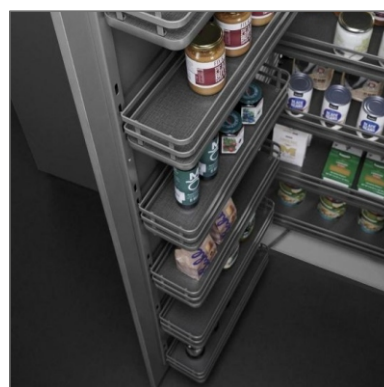
Description	Dimensions (W x D x H) mm	MRP
Satin Pantry 450 mm 12 Basket-6 Layer	414 x 500 x (1850-2150)	25500
Satin Pantry 600 mm 12 Basket-6 Layer	564 x 500 x (1850-2150)	28000





### WOODEN PANTRY DARK GREY

Description	Dimensions (W x D x H) mm	MRP
Wooden Pantry Dark Grey 450 MM 12 Basket 6 Layer	385 x 530 x (1850-2150)	30000
Wooden Pantry Dark Grey 600 MM 12 Basket 6 Layer	530 x 530 x (1850-2150)	34000
Wooden Pantry Dark Grey 450 MM 8 Basket-4 Layer	385 x 530 x (1100-1450)	26000
Wooden Pantry Dark Grey 600 mm 8 Basket-4 Layer	530 x 530 x (1100-1450)	29000

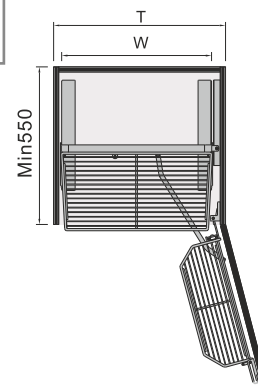
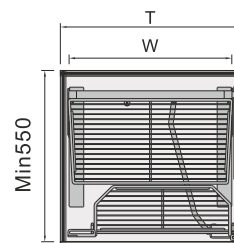


Soft Close System



### WOODEN PANTRY (SOFT CLOSE) DIAMOND STYLE

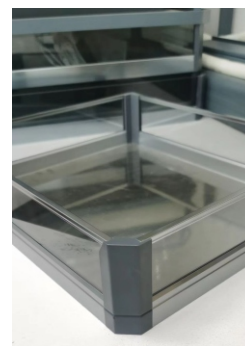
Description	Dimensions (W x D x H) mm	MRP
Wooden Pantry 450 MM 8 Basket-4 Layer	365 x 500 x (1100-1450)	26000
Wooden Pantry 450 mm 12 Basket-6 Layer	365 x 500 x (1850-2150)	31000
Wooden Pantry 600 mm 8 Basket-4 Layer	515 x 500 x (1100-1450)	29000
Wooden Pantry 600 mm 12 Basket-6 Layer	515 x 500 x (1850-2150)	35000





### GLASS PANTRY (ALUMINUM BIDDING )

Description	Dimensions (W x D x H) mm	MRP
Glass Pantry 450 mm 8 Basket-4 Layer	405 x 500 x (1150-1450)	26500
Glass Pantry 450 mm 12 Basket-6 Layer	405 x 500 x (1850-2150)	29000
Glass Pantry 600 mm 8 Basket-4 Layer	555 x 500 x (1150-1450)	30800
Glass Pantry 600 mm 12 Basket-6 Layer	555 x 500 x (1850-2150)	33500



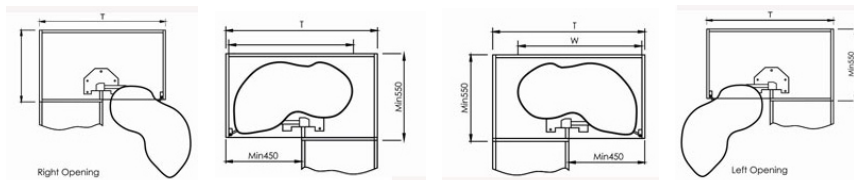
### GLASS TALL UNIT (PULL OUT TYPE)

Description	Dimensions (W x D x H) mm	MRP
Glass Tall Unit 200 MM, 6 Layer	150 x 480 x (1780-2080)	22000
Glass Tall Unit 250 mm, 6 Layer	200 x 480 x (1780-2080)	24000
Glass Tall Unit 300 mm, 6 Layer	250 x 480 x (1780-2080)	26000
Glass Tall Unit 350 mm, 6 Layer	300 x 480 x (1780-2080)	28000



### SWING CORNER ANTI SKID DARK GREY

Description	Dimensions (W x D x H) mm	MRP
S Corner Anti Skid Dark Grey soft close Left	865 x 495 x (650-750)	16300
S Corner Anti Skid Dark Grey soft close Right	865 x 495 x (650-750)	16300



### SWING CORNER (SOFT CLOSE) DIAMOND STYLE

Description	Dimensions (W x D x H) mm	MRP
S Corner Left Soft Close	865 x 495 x (650-750)	15000
S Corner Right Soft Close	865 x 495 x (650-750)	15000



### WOODEN CAROUSEL 270 DEG ANTI SKID MATT CHROME

Description	Dimensions (W x D x H) mm	MRP
Wooden Carousel 270 Deg Anti Skid Matt Chrome 900mm	813 x (600-800) mm	19300



**SR** WOODEN UNIVERSAL MAGIC CORNER (DIAMOND STYLE)

Description	Dimensions (W x D x H) mm	MRP
Wooden Universal Magic Corner soft close with Anti Skid Matt	670 x 460 x 600	26500



**SR** GLASS UNIVERSAL MAGIC CORNER WITH BIDDING

Description	Dimensions (W x D x H) mm	MRP
Glass Universal Magic Corner soft close with Bidding	670 x 460 x 600	26500



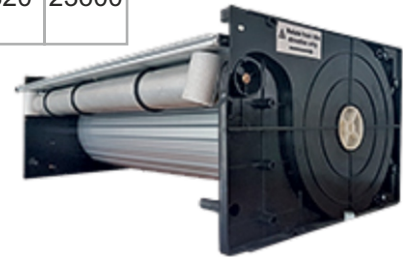
**SR** WOODEN UNIVERSAL MAGIC CORNER DARK GREY

Description	Dimensions (W x D x H) mm	MRP
Wooden Universal Magic Corner Dark Grey soft close with Anti Skid Matt	660 x 485 x 590	25000



**PVC ROLLING SHUTTER (SILVER FINISH)**

Description	Dimensions (W x D x H) mm	MRP
PVC Rolling Shutter Silver Finish 450 mm	414 x 300 x 1320	15500
PVC Rolling Shutter Silver Finish 600 mm	564 x 300 x 1320	16225
PVC Rolling Shutter Silver Finish 900 mm	864 x 300 x 1320	23600



**PVC ROLLING SHUTTER (BLACK)**

Description	Dimensions (W x D x H) mm	MRP
PVC Rolling Shutter Black 450 mm	414 x 300 x 1320	15500
PVC Rolling Shutter Black 600 mm	564 x 300 x 1320	16225
PVC Rolling Shutter Black 900 mm	864 x 300 x 1320	23600



**PVC ROLLING SHUTTER (WHITE)**

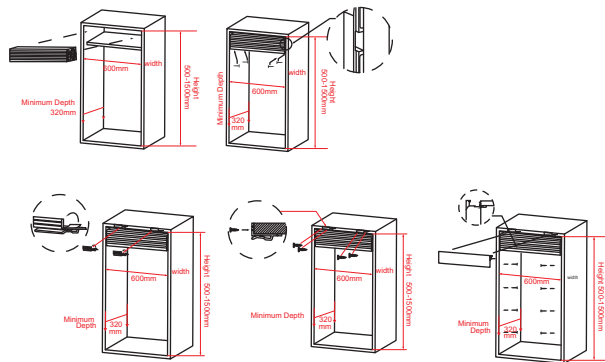
Description	Dimensions (W x D x H) mm	MRP
PVC Rolling Shutter White 450 mm	414 x 300 x 1320	15500
PVC Rolling Shutter White 600 mm	564 x 300 x 1320	16225
PVC Rolling Shutter White 900 mm	864 x 300 x 1320	23600



**GLASS ROLLING SHUTTER (BLACK LACQUERED)**

Description	Dimensions (W x D x H) mm	MRP
Glass Rolling Shutter Black Lacquered	564 x 300 x 1320	31000

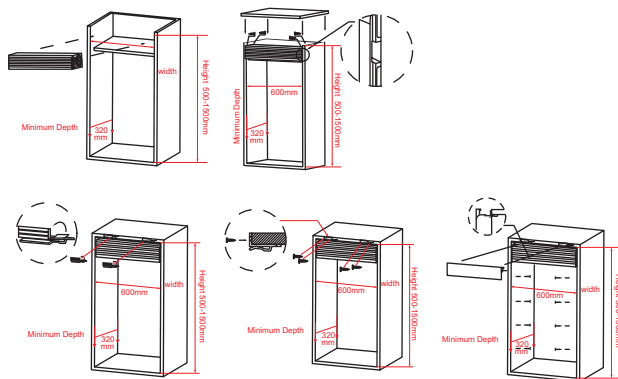
Cabinet Type A



**GLASS ROLLING SHUTTER (FROSTED LACQUERED)**

Description	Dimensions (W x D x H) mm	MRP
Glass Rolling Shutter Frosted Lacquered	564 x 300 x 1320	31000

Cabinet Type B



**GLASS ROLLING SHUTTER (WHITE LACQUERED)**

Description	Dimensions (W x D x H) mm	MRP
Glass Rolling Shutter White Lacquered	564 x 300 x 1320	31000



**WOODEN BPO (DIAMOND STYLE) SIDE MOUNTED**

Description	Dimensions (W x D x H) mm	MRP
Wooden BPO 150 mm	102 x 480 x 490	9050
Wooden BPO 200 mm	152 x 480 x 490	9050
Wooden BPO 250 mm	202 x 480 x 490	9150
Wooden BPO 300 mm	252 x 480 x 490	9460
Wooden BPO 300 mm (3S)	260 x 480 x 660	11950



**GLASS BPO (SIDE MOUNTED)**

Description	Dimensions (W x D x H) mm	MRP
Glass BPO 200 mm	154 x 500 x 490	8550
Glass BPO 250 mm	204 x 500 x 490	8900
Glass BPO 300 mm	250 x 500 x 590	9250



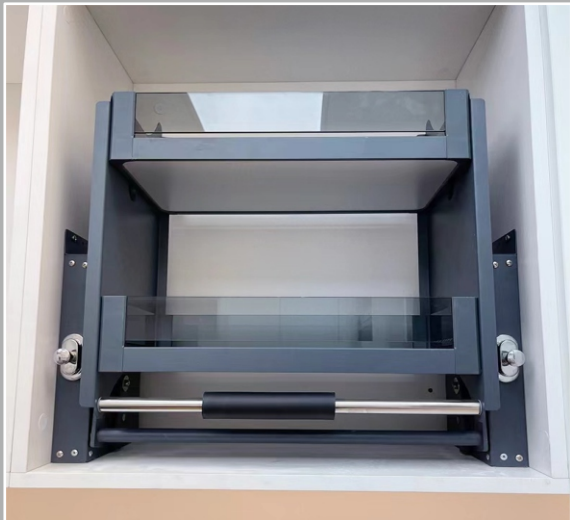
**WOODEN BPO DARK GREY SIDE MOUNTED**

Description	Dimensions (W x D x H) mm	MRP
Wooden BPO 200 mm	150 x 480 x 510	8600
Wooden BPO 250 mm	210 x 480 x 550	8900
Wooden BPO 300 mm	260 x 480 x 550	9250



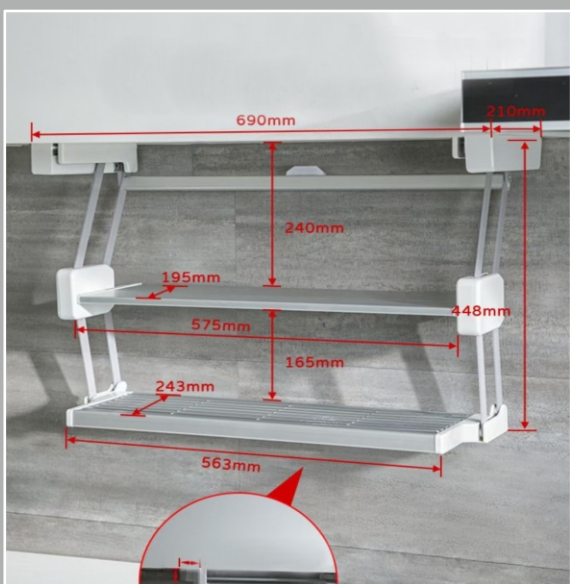
**SATIN BPO BASE MOUNTED**

Description	Dimensions (W x D x H) mm	MRP
Satin BPO 150 mm	104 x 500 x 490	5310
Satin BPO 200 mm	154 x 500 x 490	5900
Satin BPO 250 mm	204 x 500 x 490	6500
Satin BPO 300 mm	240 x 500 x 590	7080



**PULL DOWN UNIT/ELIVATOR BASKET (GLASS)**

Description	Dimensions (W x D x H) mm	MRP
Pull Down Unit Glass 600 mm	564 x 280 x 560	23100
Pull Down Unit Glass 900 mm	865 x 280 x 560	25300



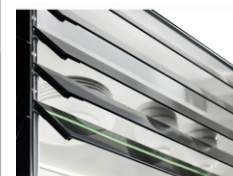
**UNDER CABINET CONDIMENT BOX**

Description	Dimensions (W x D x H) mm	MRP
Condiment Box 700 mm	690 x 210 x 448	25000



**TOUCH TO OPEN ROLLING SHUTTER WITH CABINET**

Description	Dimensions (W x D x H) mm	MRP
Touch To Open with Cabinet (White) 900 mm	900 x 310 x 760	119500
Touch To Open with Cabinet (Black) 900 mm	900 x 310 x 760	119500



**DISH RACK (STAINLESS STEEL)**

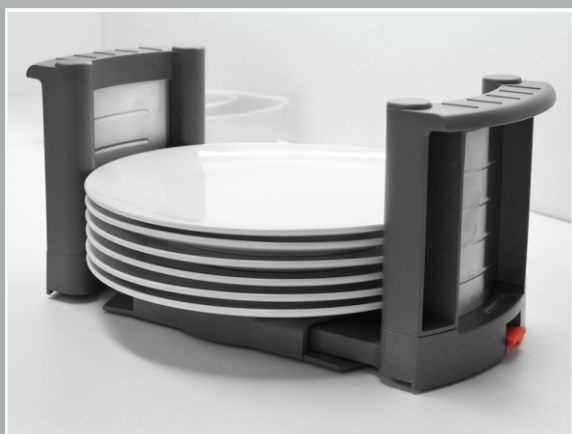
Description	Dimensions (W x D x H) mm	MRP
Dish Rack	600 mm	1625
Dish Rack	700 mm	1845
Dish Rack	800 mm	2065
Dish Rack	900 mm	2290
Dish Rack	1000 mm	2510





### PVC CUTLERY TRAY FLASH SILVER

Description	Dimensions (W x D x H) mm	MRP
PVC Cutlery Tray Flash Silver 450	385 x 485 x 60	740
PVC Cutlery Tray Flash Silver 500	435 x 485 x 60	890
PVC Cutlery Tray Flash Silver 600	535 x 485 x 60	1040
PVC Cutlery Tray Flash Silver 700	635 x 485 x 60	1180
PVC Cutlery Tray Flash Silver 800	735 x 485 x 60	1330
PVC Cutlery Tray Flash Silver 900	835 x 485 x 60	1475



### DISH PLATE HOLDER

Description	Dimensions (W x D x H) mm	MRP
Dish Plate Holder	(180-320mm) x 170	1750



### METAL DIVIDER

Description	Dimensions (W x D x H) mm	MRP
Metal Divider Silver Grey 600 x 470 mm	600 x 470 mm	2400
Metal Divider Silver Grey 600 x 500 mm	600 x 500 mm	2400
Metal Divider Silver Grey 900 x 470 mm	900 x 470 mm	5000
Metal Divider Silver Grey 900 x 500 mm	900 x 500 mm	5000



### DETERGENT PULLOUT

Description	Dimensions (W x D x H) mm	MRP
Detergent Pullout Soft Close	215 x 460 x 450	6200



### STEAM BEACH WOOD WICKER BASKET

Description	Dimensions (W x D x H) mm	MRP
Wicker Basket 450 mm (4")	414 x 460 x 100	4850
Wicker Basket 450 mm (6")	414 x 460 x 150	4850
Wicker Basket 450 mm (8")	414 x 460 x 188	4850
Wicker Basket 600 mm (4")	564 x 460 x 100	5300
Wicker Basket 600 mm (6")	564 x 460 x 150	5300
Wicker Basket 600 mm (8")	564 x 460 x 188	5300



On Order  
Customized  
Size  
Available



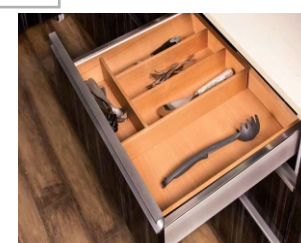
### PVC WICKER BASKET

Description	Dimensions (W x D x H) mm	MRP
Wicker Basket 450 mm (4")	414 x 460 x 100	6650
Wicker Basket 450 mm (6")	414 x 460 x 150	6650
Wicker Basket 450 mm (8")	414 x 460 x 200	6650
Wicker Basket 600 mm (4")	564 x 460 x 100	7550
Wicker Basket 600 mm (6")	564 x 460 x 150	7550
Wicker Basket 600 mm (8")	564 x 460 x 200	7550



### WOODEN ADJUSTABLE CUTLERY

Description	Dimensions (W x D x H) mm	MRP
Wooden Adjustable Cutlery 450-600 mm	450 - 600 mm Adjustable Cabinet Width	3850
Wooden Adjustable Cutlery 600-900 mm	600 - 900 mm Adjustable Cabinet Width	5750





**PLATE HOLDER, PVC**

Description	Dimensions (W x D x H) mm	MRP
Plate Holder, ABS	125 x 460 x 78	2400



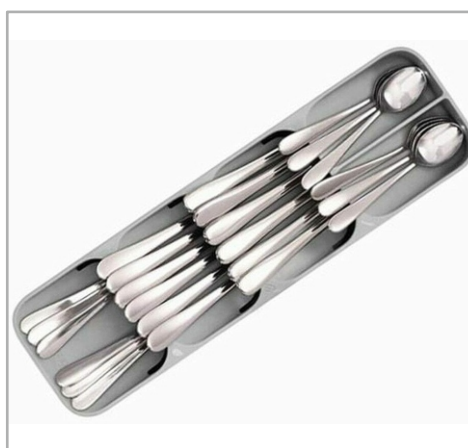
**BOWL HOLDER, PVC**

Description	Dimensions (W x D x H) mm	MRP
Bowl Holder, ABS	95 x 460 x 78	2200



**MULTI FUNCTION CHOPSTICKS BOX**

Description	Dimensions (W x D x H) mm	MRP
Chopsticks Box	110 x 395 x 55	1550



**MULTI FUNCTION KNIFE BOX**

Description	Dimensions (W x D x H) mm	MRP
Knife Box	140 x 395 x 74	1475





**SR** WIRE INLETS PARTITION

Description	Dimensions ( D x H ) mm	MRP
Saucer Holder	470 x 100	900
Dish Holder	470 x 145	950
Plate Holder	470 x 160	1000



**SR** AUTO LID WASTE BIN

Description	Dimensions (W x D x H) mm	MRP
Auto Lid Waste Bin 8 Ltr.	330 x 270x 400	2065
Auto Lid Waste Bin 14 Ltr.	350 x 290 x 430	2890



**SR** SLIDING WASTE BIN

Description	Dimensions (W x D x H) mm	MRP
Sliding Waste Bin 11+11 Ltr.	250 x 452 x 365	5825
Sliding Waste Bin 20+20 Ltr. (Soft Close)	350 x 452 x 365	9600



**SR** ANTI SLIP MATT

Description	Dimensions (W x D x H) mm	MRP
Anti Slip Matt Diamond Pattern Dark Grey (20 Mtr)	D.Grey-500 mm (Diamond Pattern)	3690



**TANDOM BOX DRAWER 4" FLASH SILVER**

Description	Dimensions (W x D x H) mm	MRP
S Box Drawer M Height Flash Silver 40 Kg Capacity	300 mm	2950
	350 mm	2950
	400 mm	2950
	450 mm	2950
	500 mm	2950
	550 mm	3250



**TANDOM BOX DRAWER 6" FLASH SILVER**

Description	Dimensions (W x D x H) mm	MRP
S Box Drawer B Height Flash Silver 40 Kg Capacity	300 mm	3390
	350 mm	3390
	400 mm	3390
	450 mm	3390
	500 mm	3390
	550 mm	3550



**TANDOM BOX DRAWER 8" FLASH SILVER**

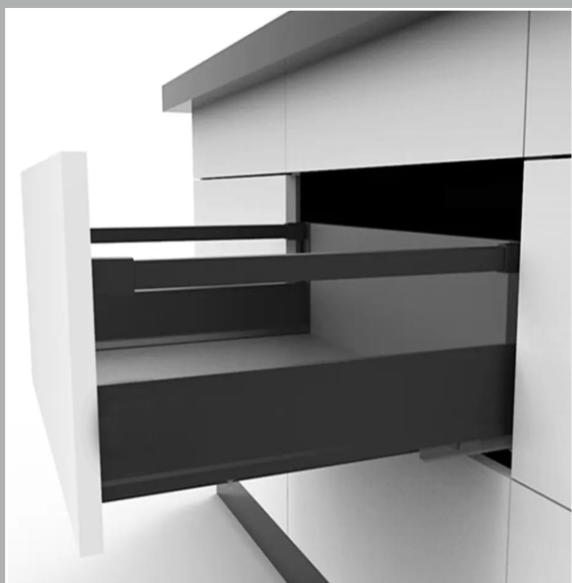
Description	Dimensions (W x D x H) mm	MRP
S Box Drawer D Height Flash Silver 40 Kg Capacity	300 mm	3850
	350 mm	3850
	400 mm	3850
	450 mm	3850
	500 mm	3850
	550 mm	4250





**TANDOM BOX 4" DARK GREY**

Description	Dimensions (W x D x H) mm	MRP
Dark Grey Drawer M Height 35 Kg Capacity	300 mm	2510
	350 mm	2510
	400 mm	2510
	450 mm	2510
	500 mm	2510
	550 mm	3100



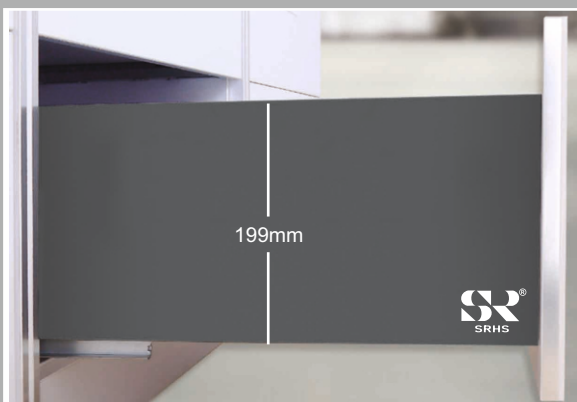
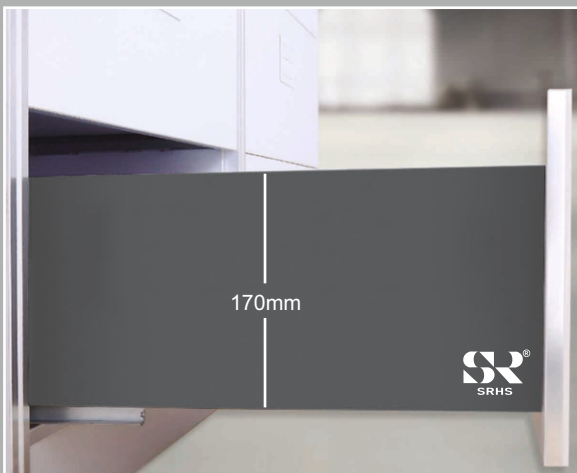
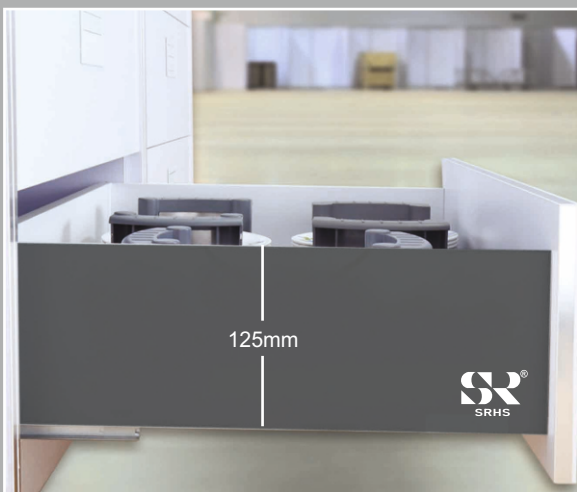
**TANDOM BOX 6" DARK GREY**

Description	Dimensions (W x D x H) mm	MRP
Dark Grey Drawer B Height 35 Kg Capacity	300 mm	2805
	350 mm	2805
	400 mm	2805
	450 mm	2805
	500 mm	2805
	550 mm	3395



**TANDOM BOX 8" DARK GREY**

Description	Dimensions (W x D x H) mm	MRP
Dark Grey Drawer D Height 35 Kg Capacity	300 mm	3100
	350 mm	3100
	400 mm	3100
	450 mm	3100
	500 mm	3100
	550 mm	3690



### SLIM BOX ANTHRACITE GREY 84 MM

Description	Dimensions (W x D x H) mm	MRP
Slim Box Anthracite Grey Weight Capacity 40 Kg. Size 84 mm	300 mm	3100
	350 mm	3100
	400 mm	3100
	450 mm	3100
	500 mm	3100
	550 mm	3500

### SLIM BOX ANTHRACITE GREY 125 MM

Description	Dimensions (W x D x H) mm	MRP
Slim Box Anthracite Grey Weight Capacity 40 Kg. Size 125 mm	300 mm	3550
	350 mm	3550
	400 mm	3550
	450 mm	3550
	500 mm	3550
	550 mm	3850

### SLIM BOX ANTHRACITE GREY 170 MM

Description	Dimensions (W x D x H) mm	MRP
Slim Box Anthracite Grey Weight Capacity 40 Kg. Size 170 mm	300 mm	3990
	350 mm	3990
	400 mm	3990
	450 mm	3990
	500 mm	3990
	550 mm	4200

### SLIM BOX ANTHRACITE GREY 199 MM

Description	Dimensions (W x D x H) mm	MRP
Slim Box Anthracite Grey Weight Capacity 40 Kg. Size 199 mm	450 mm	4450
	500 mm	4450
	550 mm	4750



**INNER DRAWER (METAL FRONT PANEL)**

Description	Dimensions (W x D x H) mm	MRP
Inner Drawer Metal Front Panel 40 Kg Capacity	600 mm	3200
	900 mm	4200



**INNER DRAWER GLASS FRONT PANEL**

Description	Dimensions (W x D x H) mm	MRP
Inner Drawer Glass Front Panel 40 Kg Capacity	600 mm	3250
	900 mm	4100



**4 SIDE GLASS DRAWER**

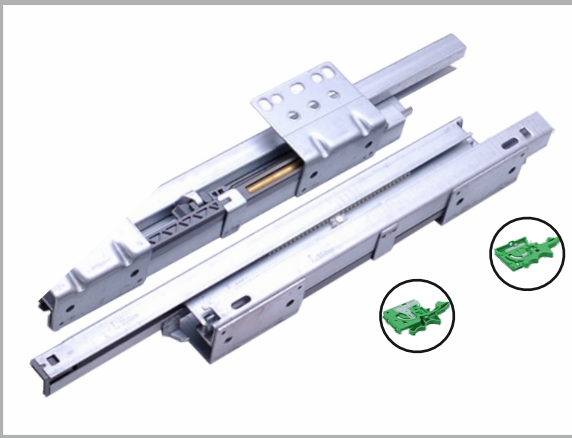
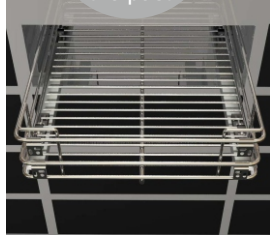
Description	Dimensions (W x D x H) mm	MRP
4 Side Glass Drawer 40 Kg Capacity	505 x 106	5280
	505 x 132	5610
	505 x 162	5940



**SR WIRE BASKET QUADRO 40 KG**

Description	Dimensions (W x D x H) mm	MRP
Wire Basket Quadro Weight Capacity 40 KG	500 mm	1875

Now Wire baskets & Aluminium baskets are thing of the past



**SR WOODEN DRAWER QUADRO 40 KG**

Description	Dimensions (W x D x H) mm	MRP
Wooden Drawer Quadro Weight Capacity 40 KG	250mm	1500
	300mm	1525
	350 mm	1550
	400 mm	1575
	450 mm	1600
	500 mm	1650
	550 mm	1700



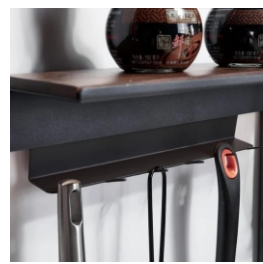
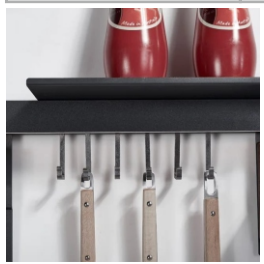
**SR SHEET BASKET QUADRO 40 KG**

Description	Dimensions (W x D x H) mm	MRP
Sheet Basket Quadro Weight Capacity 40 KG	500 mm	1650



**SR MULTI FACTIONAL HANGING RACKS**

Description	Dimensions (W x D x H) mm	MRP
Multi Factional Hanging Racks	600 & 900 mm Hanging Rod	14310



# THICK DOOR HINGES



DOOR THICKNESS  
↑ ↓ 16–25mm

40MM CUP TYPE



**SLIP ON CABINET HINGE (NORMAL)**

Description	Dimensions (W x D x H) mm	MRP
Auto Close Hinge 0°	Full Overlay	53
Auto Close Hinge 8°	Half Overlay	53
Auto Close Hinge 15°	Insert	53



**2D IRON CLIP ON CABINET HINGE (HYDRULIC)**

Description	Dimensions (W x D x H) mm	MRP
Soft Close Hinge 0°	Full Overlay	142
Soft Close Hinge 8°	Half Overlay	142
Soft Close Hinge 15°	Insert	142



**2D STAINLESS STEEL CLIP ON HINGE (HYDRULIC)**

Description	Dimensions (W x D x H) mm	MRP
Soft Close Hinge 0°	Full Overlay	163
Soft Close Hinge 8°	Half Overlay	163
Soft Close Hinge 15°	Insert	163



**3D IRON CLIP ON CABINET HINGE**

Description	Dimensions (W x D x H) mm	MRP
Soft Close Hinge 0°	Full Overlay	270
Soft Close Hinge 8°	Half Overlay	270
Soft Close Hinge 15°	Insert	270



**4D STAINLESS STEEL CLIP ON CABINET HINGE**

Description	Dimensions (W x D x H) mm	MRP
Soft Close Hinge 0°	Full Overlay	325
Soft Close Hinge 8°	Half Overlay	325
Soft Close Hinge 15°	Insert	325



**3D IRON CLIP ON CABINET HINGE (BLACK)**

Description	Dimensions (W x D x H) mm	MRP
Soft Close Hinge 0°	Full Overlay	340
Soft Close Hinge 8°	Half Overlay	340
Soft Close Hinge 15°	Insert	340



**SOFT CLOSE 165 DEGREE HINGE**

Description	Dimensions (W x D x H) mm	MRP
Soft Close Hinge	Full Overlay	670



**CORNER HINGE (165°)**

Description	Dimensions (W x D x H) mm	MRP
Auto Close Hinge	Full Overlay	325



**PIE HINGE (135°)**

Description	Dimensions (W x D x H) mm	MRP
Auto Close Pie Hinge	Pai-Cut	180



**3D BLIND CLIP ON CABINET HINGE**

Description	Dimensions (W x D x H) mm	MRP
Blind Corner Hinge 3D	Soft Close	440



**22mm PROFILE 3D CLIP ON CABINET HINGE**

Description	Dimensions (W x D x H) mm	MRP
22mm Profile 3D Hinge	Soft Close	550

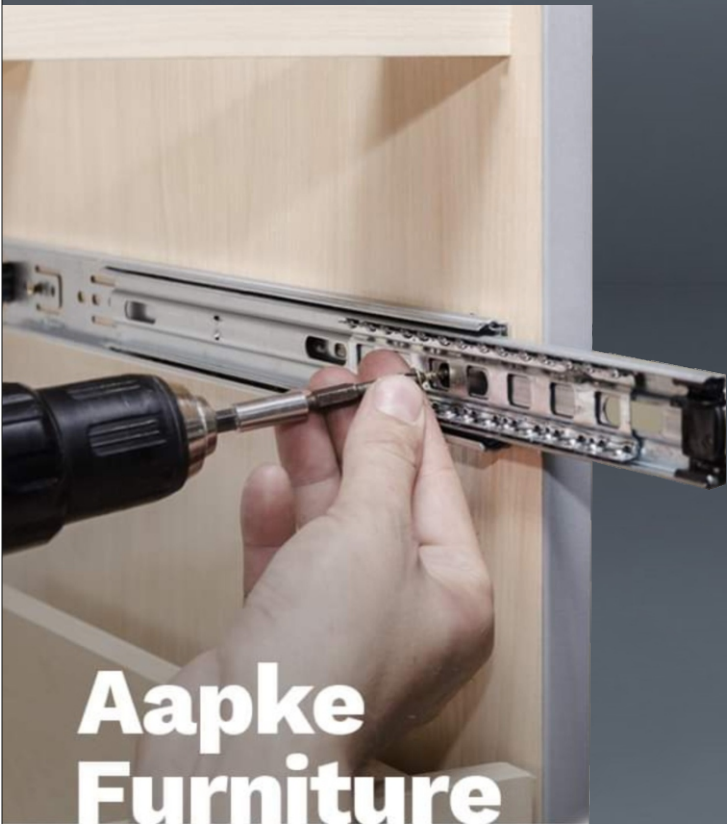


**3D THICK DOOR CLIP ON CABINET HINGE 40mm CUP**

Description	Dimensions (W x D x H) mm	MRP
Heavy Duty Soft Close Hinge 0°	Full Overlay	475
Heavy Duty Soft Close Hinge 8°	Half Overlay	475



## SOFT CLOSE & NORMAL RAIL DRAWER SLIDE



**Aapke  
Furniture  
ka Lamba  
Future**



the perfect blend  
of functionality,  
durability & style.



**SH GOLD (ECO RANGE)**

Description	Dimensions (W x D x H) mm	MRP
Economical Range	250mm (10")	150
	300mm (12")	180
	350mm (14")	210
	400mm (16")	240
	450mm (18")	270
	500mm (20")	300



**EMERALD (CLASSIC RANGE)**

Description	Dimensions (W x D x H) mm	MRP
Weight Capacity 35 Kg	200mm (8")	216
	250mm (10")	240
	300mm (12")	288
	350mm (14")	336
	400mm (16")	384
	450mm (18")	432
	500mm (20")	480



**STEEL'S (STAINLESS STEEL)**

Description	Dimensions (W x D x H) mm	MRP
Weight Capacity 45 Kg	250mm (10")	340
	300mm (12")	408
	350mm (14")	476
	400mm (16")	544
	450mm (18")	612
	500mm (20")	680



**SOLITAIRE (PREMIUM RANGE)**

Description	Dimensions (W x D x H) mm	MRP
Weight Capacity 45 Kg	250mm (10")	290
	300mm (12")	348
	350mm (14")	406
	400mm (16")	464
	450mm (18")	522
	500mm (20")	580
	550mm (22")	638
	600mm (24")	696



**SOFT CLOSE (PREMIUM RANGE)**

Description	Dimensions (W x D x H) mm	MRP
Weight Capacity 45 Kg	300mm (12")	585
	350mm (14")	682
	400mm (16")	780
	450mm (18")	878
	500mm (20")	975



**EXTRA HEAVY DUTY (53MM) (EXTRA HEAVY)**

Description	Dimensions (W x D x H) mm	MRP
Weight Capacity 150 Kg	500mm (20")	1682
	750mm (30")	2523
	800mm (32")	2690
	850mm (34")	2860
	900mm (36")	3030



### AIR HINGE

Description	Dimensions (W x D x H) mm	MRP
Air Hinge with Cover	25kg weight Capacity	5500



### BUS SLIDING DOOR HINGE

Description	Dimensions (W x D x H) mm	MRP
Bus Sliding Hinge with 80CM Aluminum Profile Pole	9Kg weight Capacity in a Single Set	11800
2400mm Aluminum Profile Pole	9Kg weight Capacity in a Single Set	6903



### POCKET CHANNEL

Description	Dimensions (W x D x H) mm	MRP
Pocket Channel	350mm (14")	
Pocket Channel	400mm (16")	
Pocket Channel	450mm (18")	
Pocket Channel	500mm (20")	
Pocket Channel	550mm (22")	
Pocket Channel	600mm (24")	



### BIFOLD LIFTUP

Description	Dimensions (W x D x H) mm	MRP
Lift-up bifold 650-729mm 7.0-13.0 kg	Height 600-900mm	10200



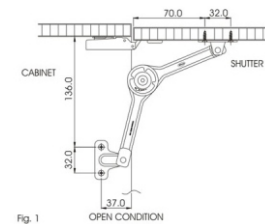
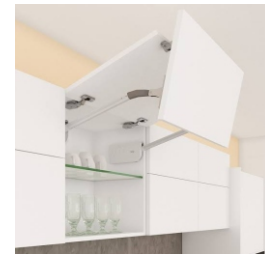
### LID STAY (FRICTION STAY)

Description	Dimensions (W x D x H) mm	MRP
Kamani Stay	Capacity 6 Kg	680



### RAPID ACTION HYDRULIC STAY

Description	Dimensions (W x D x H) mm	MRP
Lift-up 90°	Weight Capacity 8-11 Kg	4880





### EXTENDED PULLOUT DRAWER TABLE

Description	Specification	MRP
Extended Pullout Drawer Table	Fold Size 395mm to 1150mm 45kg Weight Capacity	13000



### TRANSFORMABLE PULLOUT TABLE FOR KITCHEN DINING

Description	Specification	MRP
Transformable Pullout Table Double Leg Type	Fold Size 540mm Extended Size 1770mm 80kg Weight Capacity	31500



### FOLDING STOOL SET

Description	Material	MRP
470 x 260 x 360 120 Kg	Aluminum Alloy + Steel	4600



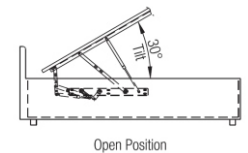
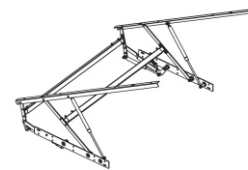
### FOLDING COFFEE TABLE

Description	Material	MRP
560mm Gas Spring	Iron	8920

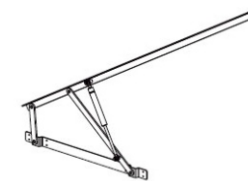


### BED FITTINGS

Description	Gas Pump Weight Available	MRP
3 Feet (3mm)	60-80-100kg (Pump Size 17")	3099
5 Feet (6mm)	100-125-150- 175-200-250 kg (Pump Size 17")	4280



Open Position

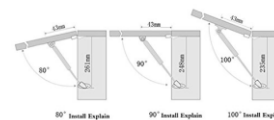
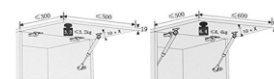


Side View

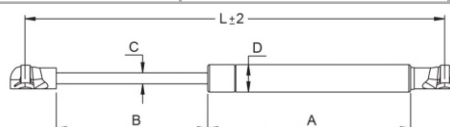


### HEAVY DUTY PRO LIFT

Description	Gas Pump Weight Available	MRP
Heavy Duty Shocker 35 Kg (12")	35 Kg	738
Heavy Duty Shocker 50 Kg (15")	50 Kg	1050
Heavy Duty Shocker 50 Kg (24")	50 Kg	1405

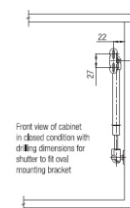


90° Install Explode 90° Install Explode 100° Install Explode

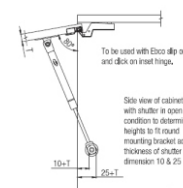


### GAS PUMP

Description	Dimensions (W x D x H) mm	MRP
Gas Shocker	9 " Normal 6 Kg	236
	9 " Normal 8 Kg	236
	9 " Normal 10 Kg	236
	9 " Normal 15 Kg	251
	9 " Normal 20 Kg	251
	9 " Normal 25 Kg	251
Gas Shocker with Soft Close	9 " Normal 10 Kg	384

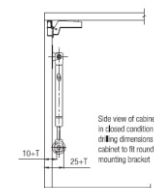


Front view of cabinet in closed condition with all dimensions for shutter to fit oval mounting bracket



To be used with Euro clip on and disc on least hinge.

Side view of cabinet with shutter in open condition to determine height to fit oval mounting bracket adding thickness of shutter (T) to dimension 10 & 25

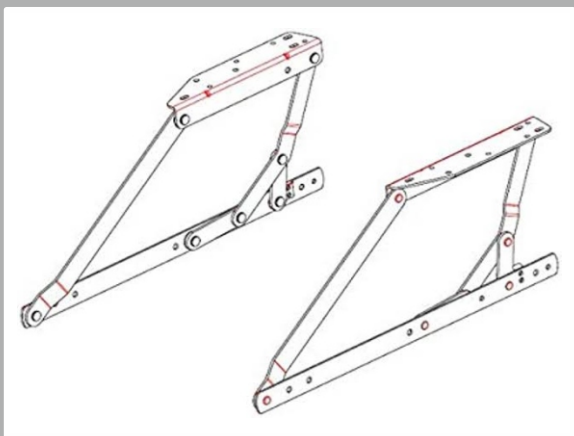


Side view of cabinet in closed condition with all dimensions for cabinet to fit oval mounting bracket



### SHOE RACK FITTING

Description	Material	MRP
2 Shelf	Iron	1150
3 Shelf	Iron	1623



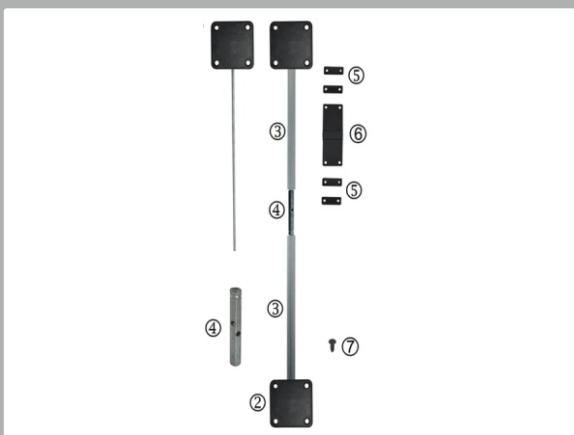
### SOFA CUM BED FITTING

Description	Material	MRP
Sofa Cum Bed	Iron	4280



### WALL MOUNT BED FITTING

Description	Material	MRP
Wall Mount Bed Fitting	Iron	10384



### DOOR STRAIGHTENER

Description	Dimension	MRP
Door Straightener 2 mtr	1000-2000mm Door Hight	1500



### PVC ADJUSTABLE LEG

Description	Dimensions (W x D x H) mm	MRP
PVC Leg	Light	33
PVC Leg	Heavy	45



### MINI FIX & DOWEL WOODEN

Description	Dimensions (W x D x H) mm	MRP
Mini Fix	3 Piece Set	12
Dowel (Wooden)	8 x 40 mm	0.90



### MICROWAVE OWEN BRACKET

Description	Dimensions (W x D x H) mm	MRP
Microwave Owen Bracket	45 x 290 x 250 mm	1180



### SHELF SUPPORT

Description	Dimensions (W x D x H) mm	MRP
Shelf Support Glass	Glass Shelf	6.80

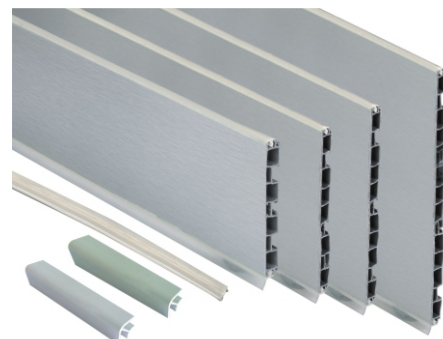
### VENTILATING FRAME

Description	Dimensions (W x D x H) mm	MRP
Ventilating Frame	80 x 100 mm	132
	80 x 150 mm	176
	80 x 200 mm	220
	80 x 250 mm	264
	80 x 300 mm	308



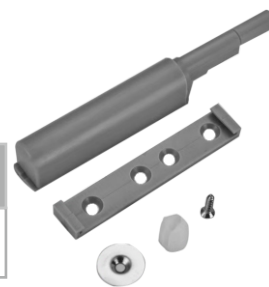
### PVC SKIRTING

Description	Dimensions (W x D x H) mm	MRP
PVC Skirting Silver	100 mm	800
	100 mm Flexible Connector	70
PVC Skirting Black	100 mm	900
	100 mm Flexible Connector	80
PVC Skirting Silver	150 mm	1400
	150 mm Flexible Connector	100
PVC Skirting Black	150 mm	1500
	150 mm Flexible Connector	100



### PUSH OPEN CATCHER

Description	Dimensions (W x D x H) mm	MRP
Push Open Catcher	15 x 80 x 17 mm	83



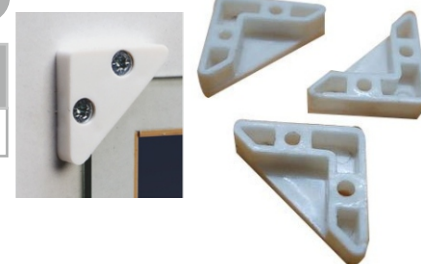
### FOLDING BRACKET

Description	Size	MRP
Folding Bracket	12"	826
Folding Bracket	16"	1098
Folding Bracket	20"	1369
Folding Bracket	24"	1641



### PVC CORNER BRACKET

Product Code	Colour	MRP
Corner Bracket	White	3



### CABINET HANGING BRACKET

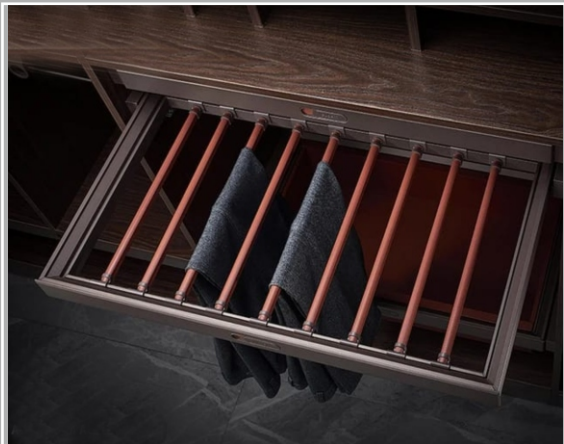
Description	Dimensions (W x D x H) mm	MRP
Cabinet Hanging Bracket	Weight Capacity 50 kg	163



**EFFORTLESSLY ORGANIZE BEAUTIFULLY SIMPLIFY**

**EASY TO STORAGE  
ONE STATION FOR YOUR DRESSING**





**TROUSER RACK SOFT CLOSE**

Description	Dimensions (W x D x H) mm	MRP
Trouser Rack Soft Close 600 mm	564 x 460 x 71	8250
Trouser Rack Soft Close 900 mm	864 x 460 x 71	9350



**WARDROBE CLOTH LIFTER**

Description	Dimensions (W x D x H) mm	MRP
Wardrobe Uplifter 20 Kg	(830-1150) x 820	5750



**SOFT CLOSE DECORATIVE SHELF**

Description	Dimensions (W x D x H) mm	MRP
Decorative Rack Soft Close 600 mm	564 x 460 x 71	12100
Decorative Rack Soft Close 900 mm	864 x 460 x 71	14300



**SOFT CLOSE RATTAN BASKET**

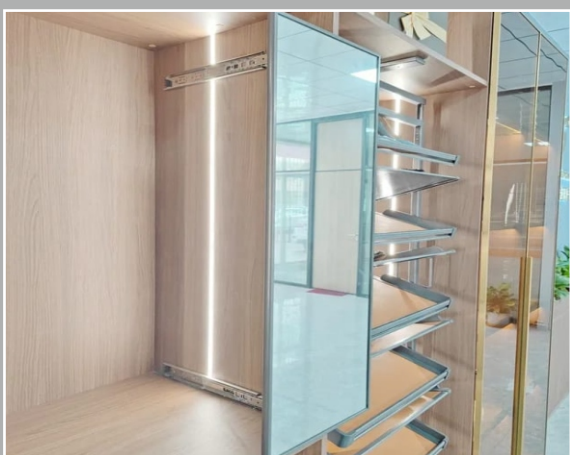
Description	Dimensions (W x D x H) mm	MRP
Rattan Basket Soft Close 600 mm	564 x 460 x 185	12100
Rattan Basket Soft Close 900 mm	864 x 460 x 185	14300





### SOFT CLOSE SHOE RACK

Description	Dimensions (W x D x H) mm	MRP
Shoe Rack Soft Close 600 mm	564 x 460 x 170	11000
Shoe Rack Soft Close 900 mm	864 x 460 x 170	12100



### REVOLVE MIRROR

Description	Dimensions (W x D x H) mm	MRP
Revolve Mirror	1200 x 350 mm	6350



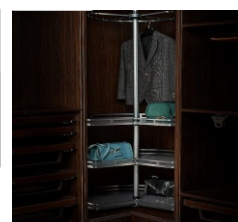
### REVOLVE IRON BOARD

Description	Dimensions (W x D x H) mm	MRP
Revolve Iron Board	295 x 430 x 140	9020



### ROTETING CLOTH BASKET

Description	Dimensions (W x D x H) mm	MRP
Roteting Cloth Basket 4 Layer	720 x 720 x 900-1100	30975





### SRHS TROUSER RACK DOUBLE

Description	Dimensions (W x D x H) mm	MRP
Trouser Rack Double	630 x 455 x 115	8250



### SRHS TROUSER RACK SINGLE

Description	Dimensions (W x D x H) mm	MRP
Trouser Rack Single	340 x 455 x 140	7150



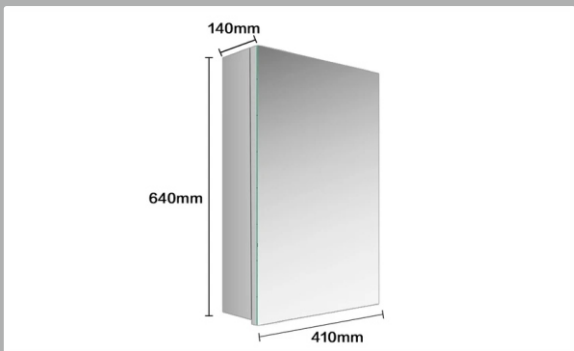
### SRHS REVOLVE SHOE RACK

Description	Dimensions (W x D x H) mm	MRP
Revolve Shoe Rack (10 Layer)	700 x 360 x (1630-1830)	34100



### SRHS CLOTHES HANGING RACK

Description	Dimensions (W x D x H) mm	MRP
Clothes Hanging Rack	115 x 455 x 115	4950



### SRHS MIRROR CABINET BOX SS 304

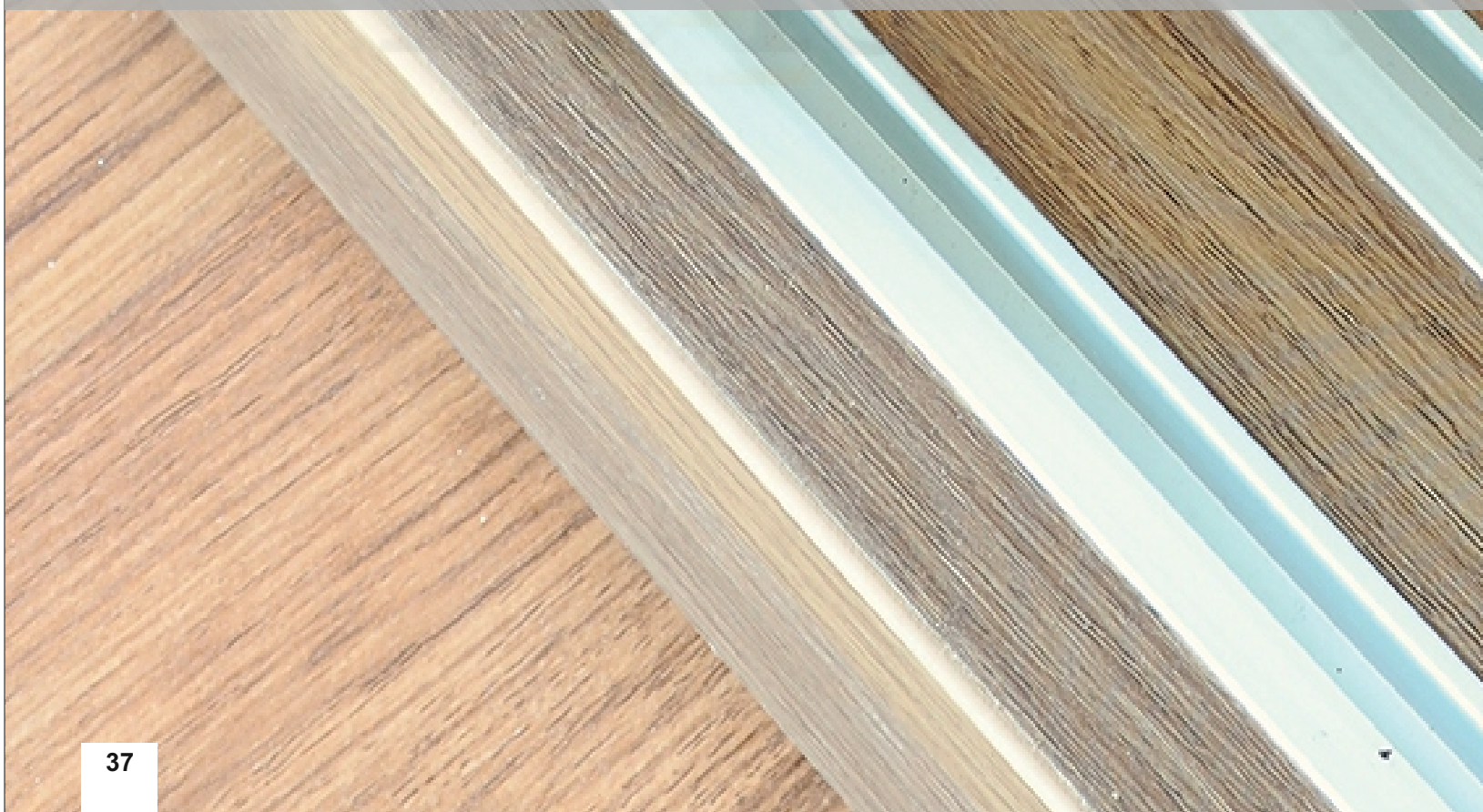
Description	Dimensions (W x D x H) mm	MRP
Mirror Cabinet Box SS 304	410 x 140 x 640	7520

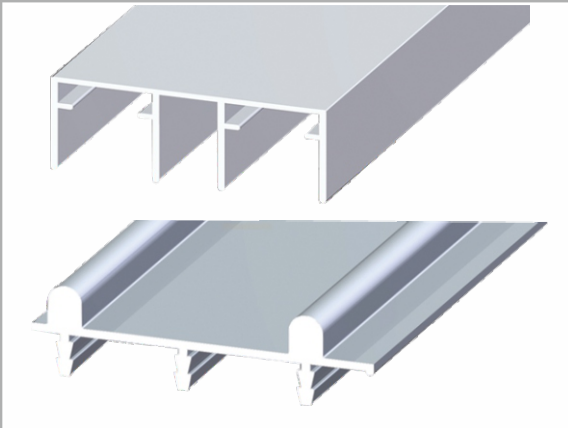


## SLIDING SOLUTION

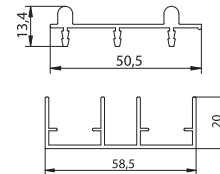
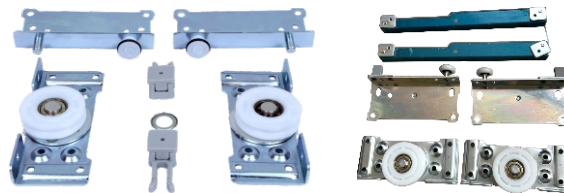
DOUBLE TRACK | C CHANNEL | 56 NO | U TRACK (TAKLU)

SHOWCASE CHANNEL



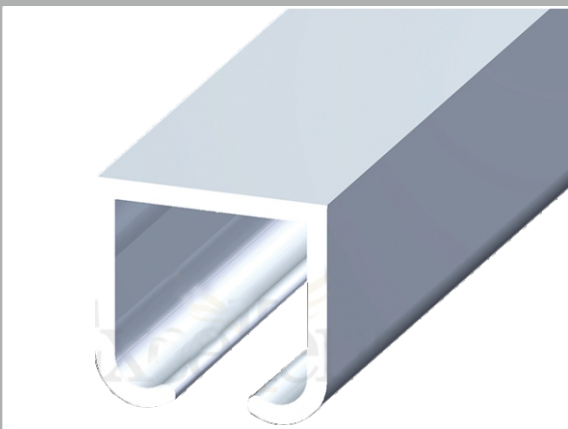


### DOUBLE TRACK CHANNEL & WHEELS (TWO TRACK)



Aluminium Track

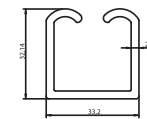
Description	Dimensions (W x D x H) mm	MRP
Double Track	8 Feet	1700
	13 Feet	2760
Wheel Set	Normal	325
	Soft Close	1770



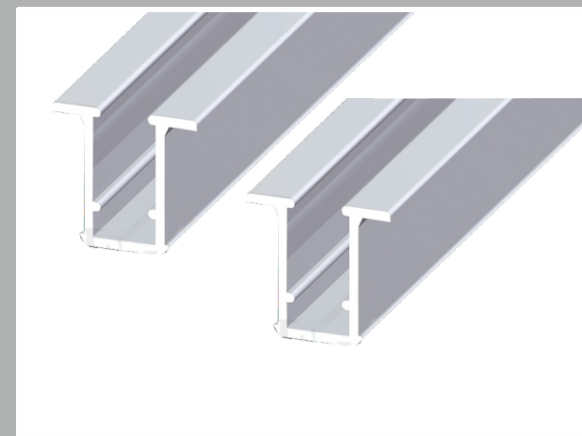
### C TRACK/ U TRACK CHANNEL & WHEELS (HEAVY)



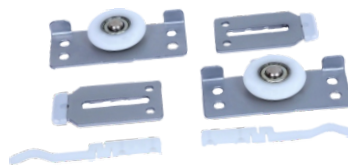
Description	Dimensions (W x D x H) mm	MRP
C Track	8 Feet	1700
	13 Feet	2760
Wheel Set	4 Wheel	710
	8 Wheel	1120



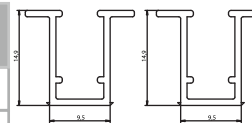
Aluminium Track



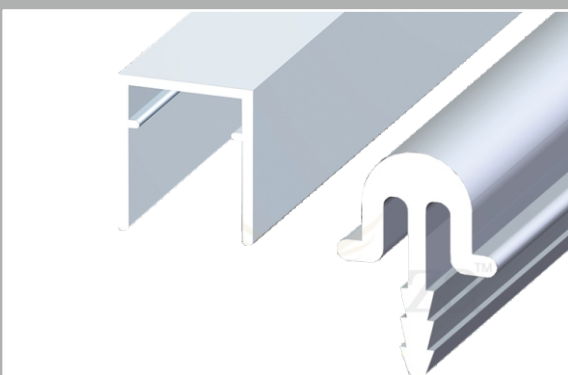
### SINGLE U-TYPE TRACK & WHEELS (56 No.)



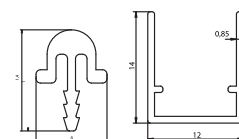
Description	Dimensions (W x D x H) mm	MRP
U Track - 12mm	13 Feet	650
Wheel Set	Wheel 56 No.	177



Aluminium Track

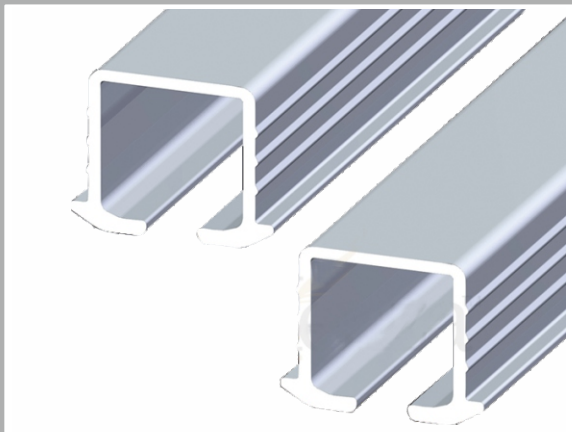


### SINGLE TRACK - TOP BOTTOM & WHEELS

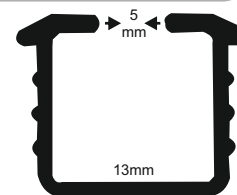


Aluminium Track

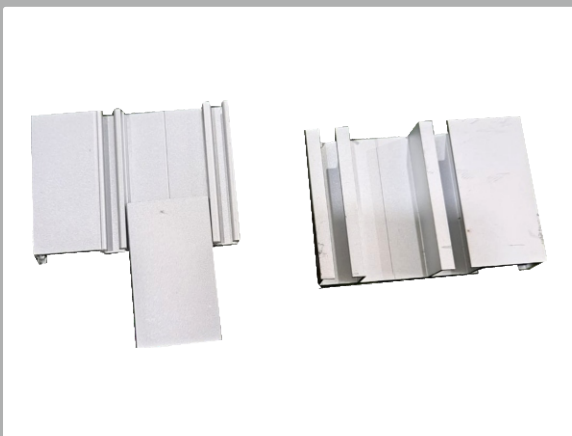
Description	Dimensions (W x D x H) mm	MRP
Top Bottom Track -12mm	13 Feet	1240
Wheel Set	Taklu	236



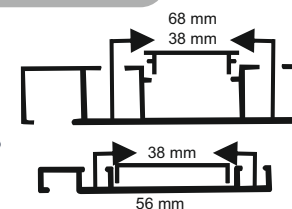
**SINGLE TRACK & WHEELS HYDRAULIC (HEAVY DOORS)**



Description	Dimensions (W x D x H) mm	MRP
Single Track	8 Feet	474
	13 Feet	770
Wheel Set	Soft Close	2220



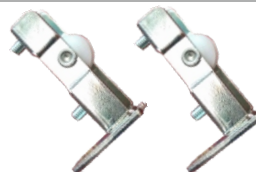
**HYDRULIC DOUBLE TRACK CHANNEL & WHEELS**



Description	Dimensions (W x D x H) mm	MRP
Single Track	8 Feet	2360
	13 Feet	3835
Wheel Set	Soft Close	2220



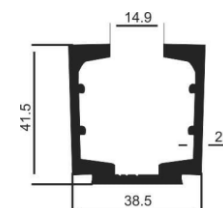
**SHOWCASE GLASS SLIDING TRACK & WHEELS**



Description	Dimensions (W x D x H) mm	MRP
Showcase Track	6.5 Feet	2110
	10 Feet	3245
Wheel Set	Normal	325



**HYDRAULIC C TRACK & WHEELS**



Description	Dimensions (W x D x H) mm	MRP
Double Track	8 Feet	2832
	13 Feet	4602
Wheel Set	8 Wheel Soft Close	4838

**STAINLESS STEEL LADDERS (HEAVY DUTY)**



S.S.RIVETING FOR LONG DURABILITY



PLASTIC GAUGE MADE FROM VIRGIN PLASTIC MATERIAL



FRAME MADE FROM HIGH QUALITY S.S.202



FOOT REST MADE FROM ALUMINIUM WITH ANTI SKID MATT



Description	Dimensions (W x D x H) mm	Finish	MRP
SS Ladder 4 steps	Weight capacity upto 160Kg	SS/Chrome	5900/-
SS Ladder 5 steps	Weight capacity upto 160Kg	SS/Chrome	7375/-
SS Ladder 6 steps	Weight capacity upto 160Kg	SS/Chrome	8850/-
SS Ladder 7 steps	Weight capacity upto 160Kg	SS/Chrome	10325/-
SS Ladder 8 steps	Weight capacity upto 160Kg	SS/Chrome	11800/-

**TELESCOPIC ALUMINUM LADDERS (HEAVY DUTY)**



Anti-slip top cap



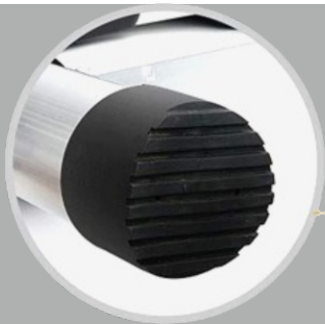
Self-locking mechanism



Convenient storage strap



Easy-carrying base handle



Non-slip end caps



Strengthening footboard

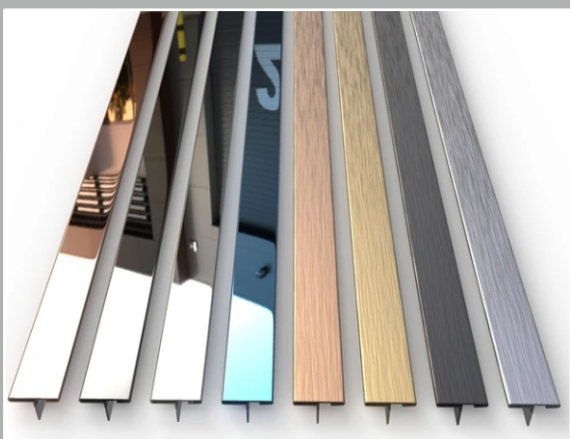


Description	Dimensions (W x D x H) mm	Finish	MRP
10 Steps (2.9 Meter)	Weight capacity upto 160Kg	Aluminum	11800/-
13 Steps (3.8 Meter)	Weight capacity upto 160Kg	Aluminum	14050/-
15 Steps (4.4 Meter)	Weight capacity upto 160Kg	Aluminum	16050/-
16 Steps (5.4 Meter)	Weight capacity upto 160Kg	Aluminum	19800/-



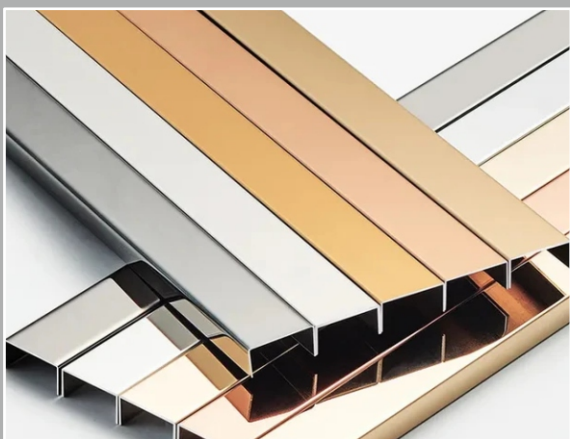
### SR STAINLESS STEEL FLAT STRIP

Description	Finish	Size	MRP
(PVD Finish) Stainless Steel Flat Strip 8 Feet	Rose Gold Golden CP Glossy Black Glossy	12mm	124
		19mm	197
		25mm	259
		38mm	393
		50mm	517
		75mm	775
		100mm	1033



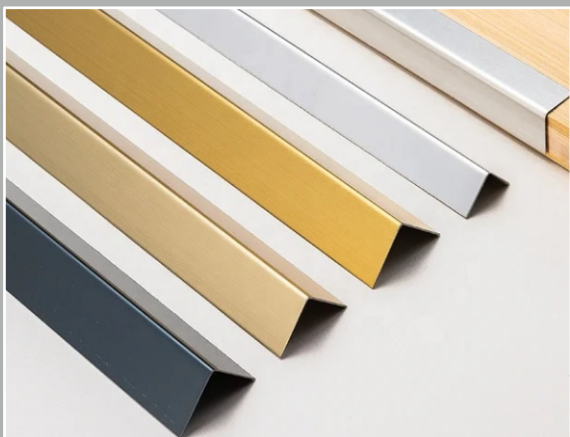
### SR STAINLESS STEEL T PATTI

Description	Finish	Size	MRP
(PVD Finish) Stainless Steel T Patti 8 Feet	Rose Gold Golden CP Glossy Black Glossy	8mm	664
		12mm	738
		19mm	885
		25mm	1033
		38mm	1180



### SR STAINLESS STEEL U PROFILE

Description	Finish	Size	MRP
(PVD Finish) Stainless Steel U Profile 8 Feet	Rose Gold Golden CP Glossy Black Glossy	6 x 6 x 8mm	428
		6 x 6 x 12mm	605
		6 x 6 x 18mm	664
		6 x 6 x 25mm	753
		6 x 6 x 38mm	915
		6 x 6 x 50mm	915



### SR STAINLESS STEEL L CORNER PROFILE

Description	Finish	Size	MRP
(PVD Finish) Stainless Steel L Corner Profile 8 Feet	Rose Gold Golden CP Glossy Black Glossy	L 12 x 12mm	292
		L 19 x 19mm	458
		L 25 x 25mm	560
		L 38 x 38mm	853
		L 50 x 50mm	1124



Reg. No. 3419467



बेजोड़ पकड़,  
मजबूत फर्नीचर



SCREW HO

TOH ,

WARNA NA HO

Black Drywall, Cp Drywall,  
Zinc Chipboard, Hylux,  
Truss Head & SDS Head

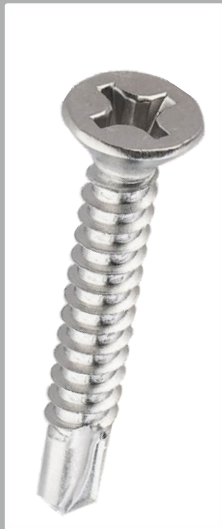
### CHIP BOARD SCREW

Size	Pcs/Box	Box/CTN
4*35	500	20
4*50	500	16
4*60	500	16
5*35	500	16
5*50	250	16
5*60	250	16
5*75	250	16
5*100	250	16



### SDS PLUS HEAD SCREW

Size	Pcs/Box	Box/CTN
3.9*13	1000	20
3.9*19	1000	20
3.9*25	1000	20
3.9*32	500	16
3.9*38	500	16
3.9*50	250	16



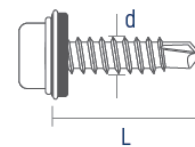
### CHROME PLATED DRYWALL SCREW

Size	Pcs/Box	Box/CTN
13*6	1000	20
19*6	1000	20
25*6	1000	20
32*6	1000	20
38*6	500	20
25*8	500	16
32*8	500	16
38*8	500	16
50*8	500	16
60*8	250	16
75*8	200	16



### BLACK DRYWALL SCREW

Size	Pcs/Box	Box/CTN
3.5*13	1000	20
3.5*16	1000	20
3.5*19	1000	20
3.5*25	1000	16
3.5*32	1000	16
3.5*38	500	16
3.5*50	500	16
3.5*60	250	16



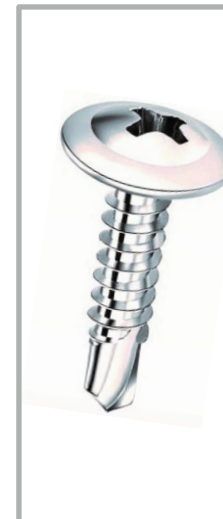
### SDS HEX HEAD SCREW

Size	Pcs/Box	Box/CTN
10*20	700	10
10*25	600	10
12*25	500	10
12*35	350	10
12*55	250	10
12*68	200	10
12*75	150	10



### SDS TRUSS HEAD SCREW

Size	Pcs/Box	Box/CTN
4.2*13	1000	16
4.2*19	1000	16
4.2*25	800	16
4.2*38	500	16



### CONNECTOR SCREW



Size	Pcs/Box	Box/CTN	MRP Per Pcs
5 x 22	200	10	4.5
5 x 27	200	10	5.30
5 x 32	200	10	5.70
5 x 38	200	10	5.90

### HOLLOW WALL HANGER (9 BALL)



Finish	Size	Master Pack	MRP/Pcs
Nickel/Chrome	18"	50 pic	295

### MAGNETIC DOOR HOLDER (BELL MAGNET)



Material	Finish	Length	MRP/Pcs
Stainless Steel	SS	80mm	148

### MAGNETIC DOOR HOLDER (ROUND)



Material	Finish	Length	MRP/Pcs
Stainless Steel	SS	80mm	113

### IRON MULTIPURPOSE LOCK



Item	Master Pack	MRP/Pcs
Iron Multipurpose Lock -22MM		

### ULTRA KEY DRAWER LOCK (MASTER KEY)



Item	Master Pack	MRP/Pcs
Ultra Key Drawer lock -22MM	12Pcs	222
Ultra Key Drawer lock -32MM	12Pcs	270

### PUSH LOCK



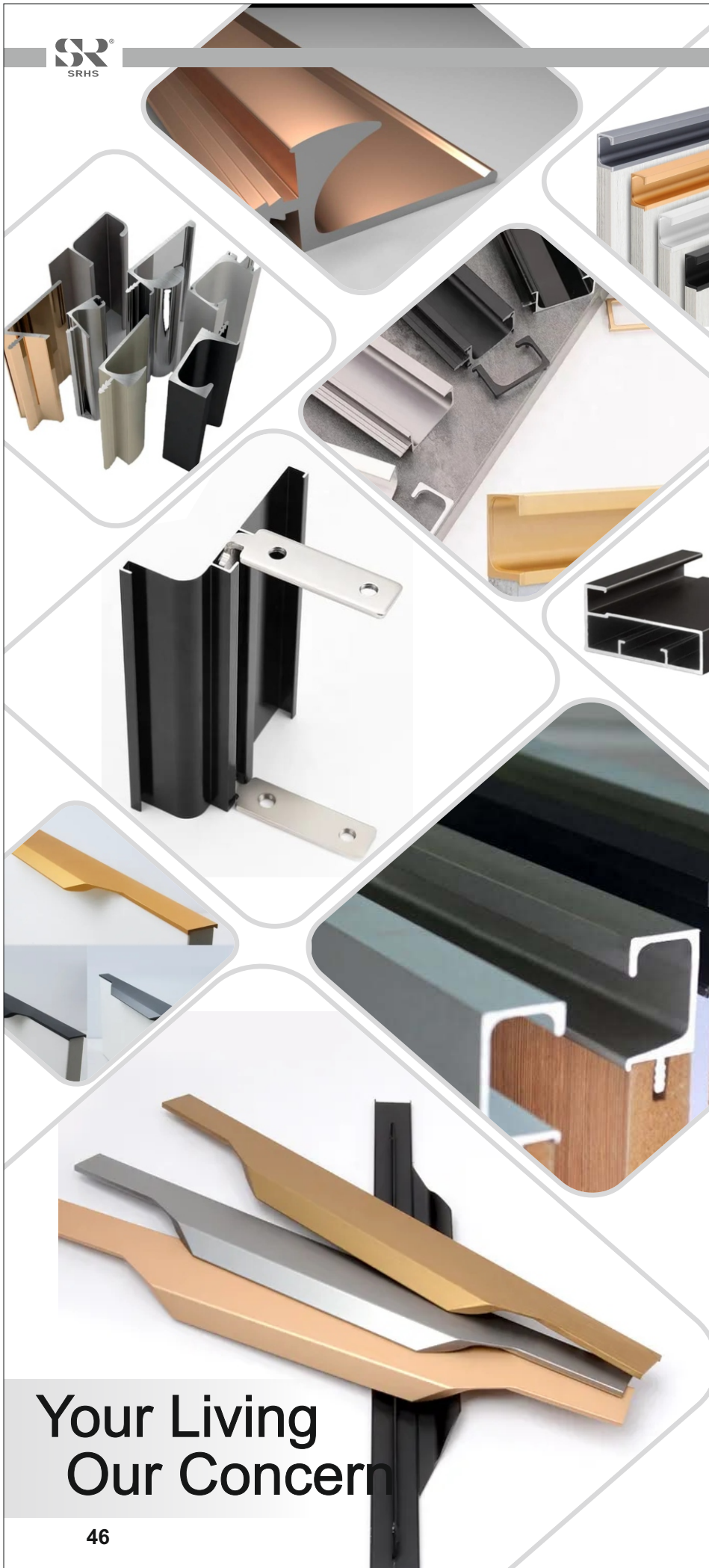
Item	Master Pack	MRP/Pcs
Push Lock-22MM	25Pcs	133
Push Lock-32MM	25Pcs	168

### SLIDING LOCK (NEW ARRIVAL)

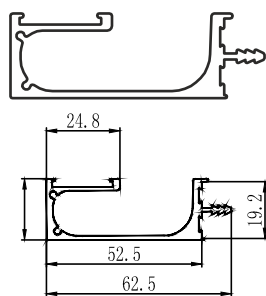
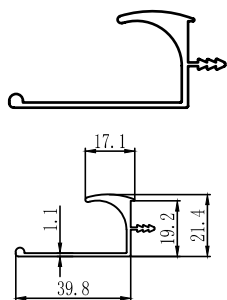
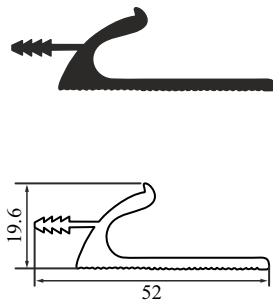
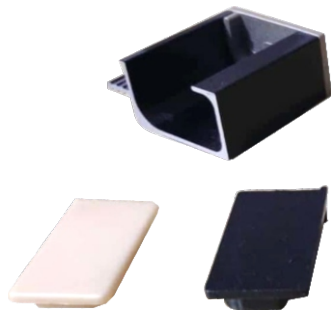
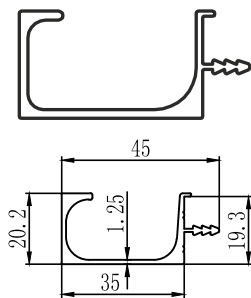


Item	Master Pack	MRP/Pcs
Sliding Lock (New Arival)	25Pcs	450

# Style Your Wardrobe & Kitchen with Trendy Aluminum Profiles



Your Living  
Our Concern



### G-HANDLE PROFILE 35MM

Finish	Size	MRP
Anodized	3 Mtr.	1735
Rose Gold	3 Mtr.	2390
Matt Black	3 Mtr.	2090
C P Glossy	3 Mtr.	2200
Iron Grey	3 Mtr.	2490

### G-HANDLE END CAP 35MM

Finish	Size	MRP
Matt Black	2 Piece Set	55
Rose Gold	2 Piece Set	61
C P Glossy	2 Piece Set	61

### J HANDLE PROFILE CURVED

Finish	Size	MRP
Matt Black	3 Mtr.	2525
Rose Gold	3 Mtr.	2650
C P Glossy	3 Mtr.	2525

### J-HANDLE PROFILE

Finish	Size	MRP
Anodized	3 Mtr.	1500
CP Glossy	3 Mtr.	1980
Rose Gold	3 Mtr.	2035
Matt Black	3 Mtr.	1760

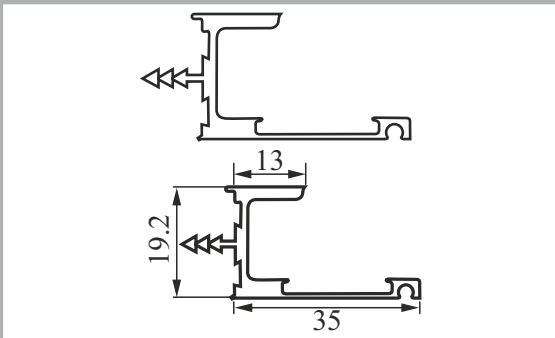
### G-HANDLE PROFILE WITH MICA INSERT

Finish	Size	MRP
Matt Black	3 Mtr.	3630
Iron Grey	3 Mtr.	4455
Rose Gold	3 Mtr.	4455



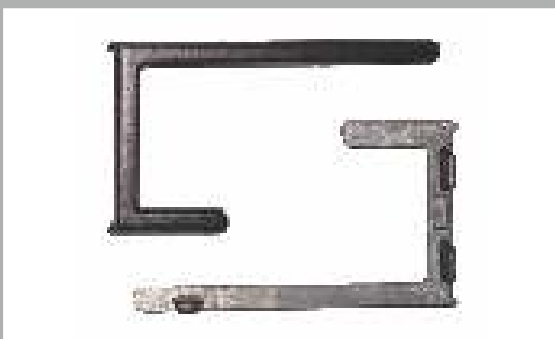
### G-HANDLE PROFILE MICA INSERT END CAP

Finish	Size	MRP
Matt Black	2 Piece Set	195
Iron Grey	2 Piece Set	195
Rose Gold	2 Piece Set	195



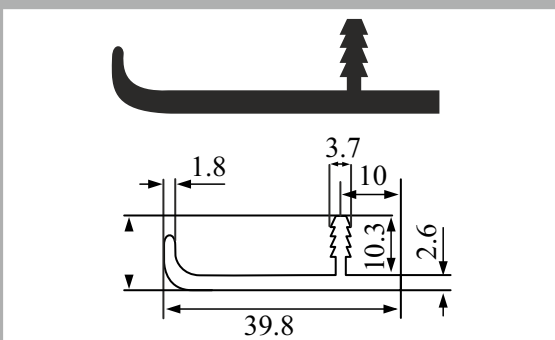
### J-HANDLE PROFILE WITH MICA INSERT

Finish	Size	MRP
Rose Gold	3 Mtr.	3200



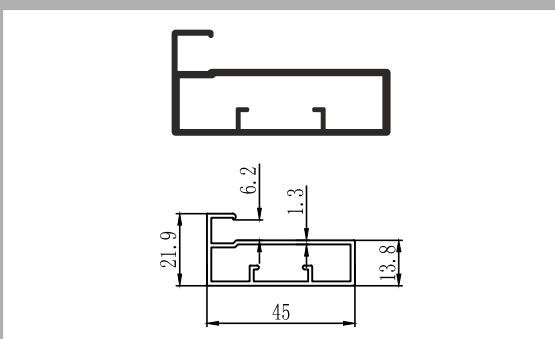
### J-HANDLE PROFILE MICA INSERT END CAP

Finish	Size	MRP
Rose Gold	2 Piece Set	132



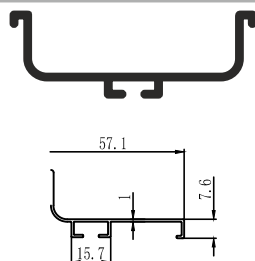
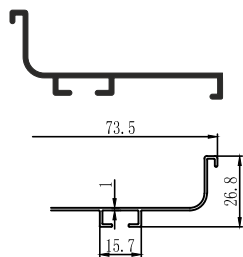
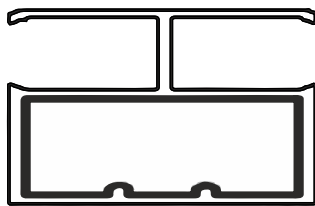
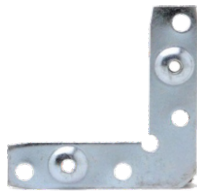
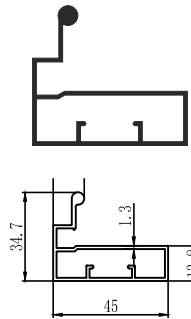
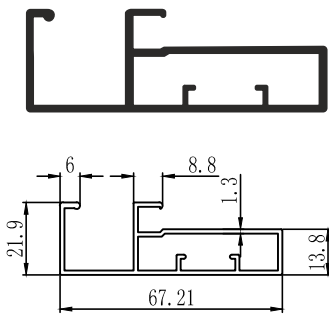
### F-HANDLE PROFILE 40 MM

Finish	Size	MRP
CP Glossy	3 Mtr.	2090
Rose Gold	3 Mtr.	2310
Matt Black	3 Mtr.	1980



### GLASS FRAME PROFILE 45MM

Finish	Size	MRP
Anodized	3 Mtr.	2200
Rose Gold	3 Mtr.	2670
Matt Black	3 Mtr.	2315
CP Glossy	3 Mtr.	2585
Iron Grey	3 Mtr.	2750



### GLASS HANDLE PROFILE 68MM

Finish	Size	MRP
Anodized	3 Mtr.	2970
Rose Gold	3 Mtr.	3375
Matt Black	3 Mtr.	3190
CP Glossy	3 Mtr.	3520
Iron Grey	3 Mtr.	3685

### BINDI GLASS HANDLE 45MM

Finish	Size	MRP
Anodized	3 Mtr.	2695
Rose Gold	3 Mtr.	3300
Matt Black	3 Mtr.	2860
CP Glossy	3 Mtr.	3190

### CONNECTOR FOR 45MM & 22MM PROFILE

Description	Size	MRP
L Conecter	4 Piece Set	105

### GLASS FRAME DIVIDER 45MM

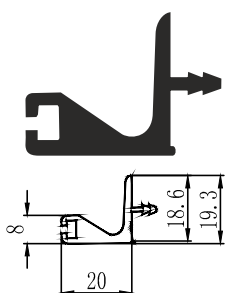
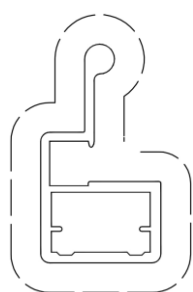
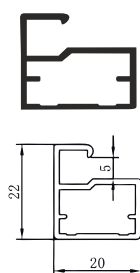
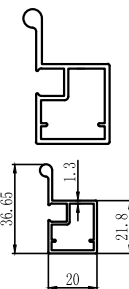
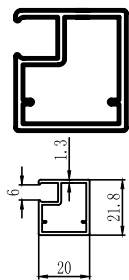
Finish	Size	MRP
Rose Gold	3 Mtr.	2425
Matt Black	3 Mtr.	2150
Iron Grey	3 Mtr.	2500

### J GOLA PROFILE

FINISH	Size	MRP
CP Glossy	3 Mtr.	1650
Rose Gold	3 Mtr.	1735
Matt Black	3 Mtr.	1485

### C GOLA PROFILE

Finish	Size	MRP
CP Glossy	3 Mtr.	2035
Rose Gold	3 Mtr.	2145
Matt Black	3 Mtr.	1870



### GLASS FRAME PROFILE 21MM

Finish	Size	MRP
CP Glossy	3 Mtr.	1870
Rose Gold	3 Mtr.	1480
Matt Black	3 Mtr.	1760

### GLASS HANDLE PROFILE 21MM

Finish	Size	MRP
CP Glossy	3 Mtr.	2475
Rose Gold	3 Mtr.	2585
Matt Black	3 Mtr.	2255

### GLASS FRAME 20MM

Finish	Size	MRP
CP Glossy	3 Mtr.	1970
Rose Gold	3 Mtr.	1580
Matt Black	3 Mtr.	1860

### BINDI GLASS HANDLE 20MM

Finish	Size	MRP
CP Glossy	3 Mtr.	2100
Rose Gold	3 Mtr.	2100
Matt Black	3 Mtr.	2100

### TOP GOLA PROFILE

Finish	Size	MRP
Anodized	3 Mtr.	1925
Rose Gold	3 Mtr.	2310
Matt Black	3 Mtr.	1980



### J GOLA & C GOLA END CAP

Finish	Size	MRP
CP Glossy	2 Piece Set	136



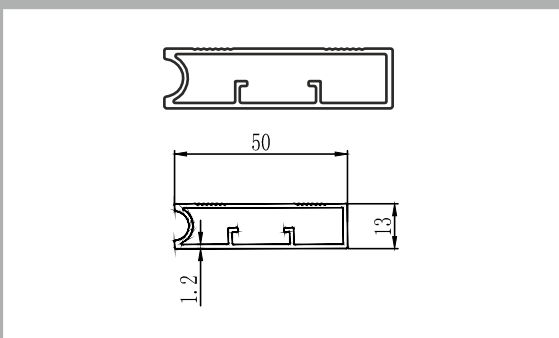
### J GOLA & C GOLA CORNER CONNECTOR

Finish	Size	MRP
CP Glossy	1 Piece Set	693



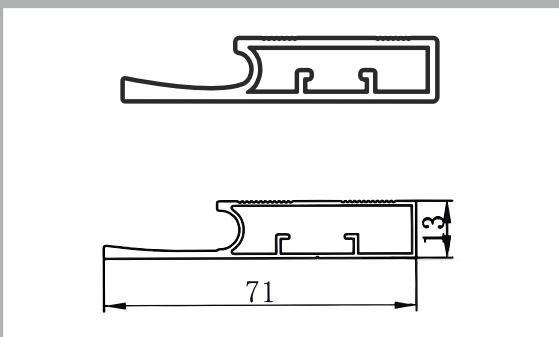
### J GOLA & C GOLA CONNECTOR

Description	Size	MRP
J Gola & C Gola Connector	4 Piece Set	127



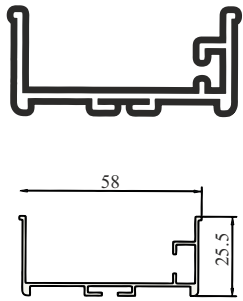
### GLASS PASTING FRAME 13MM HEIGHT

Finish	Size	MRP
Matt Black	3 Mtr.	1960
Rose Gold	3 Mtr.	2775



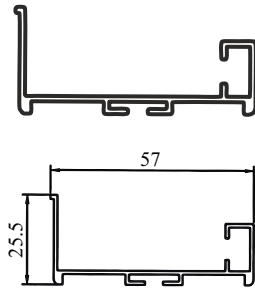
### GLASS PASTING HANDLE

Finish	Size	MRP
Matt Black	3 Mtr.	2585
Rose Gold	3 Mtr.	2640



### C GOLA L.E.D. SQUARE PROFILE

Finish	Size	MRP
Rose Gold	3 Mtr.	2250
Matt Black	3 Mtr.	2145



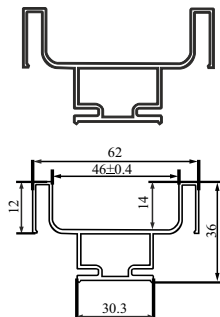
### J GOLA LED SQUARE PROFILE

Finish	Size	MRP
Rose Gold	3 Mtr.	2070
Matt Black	3 Mtr.	2008



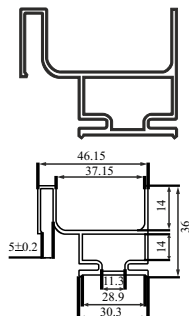
### LED SQUARE GOLA CONNECTER

Finish	Size	MRP
Zinc	4 Piece Set	177



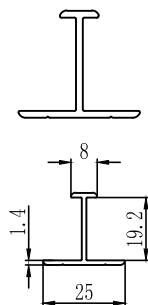
### VERTICAL C GOLA

Finish	Size	MRP
Rose Gold	3 Mtr.	5500
Matt Black	3 Mtr.	4675



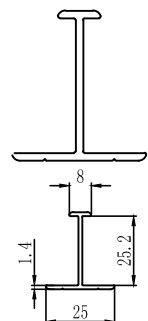
### VERTICAL J GOLA

Finish	Size	MRP
Rose Gold	3 Mtr.	4730
Matt Black	3 Mtr.	4045



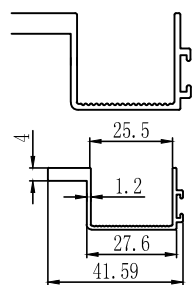
### SHUTTER DIVIDER FOR 18MM

Finish	Size	MRP
Rose Gold	3 Mtr.	1265
Matt Black	3 Mtr.	1080



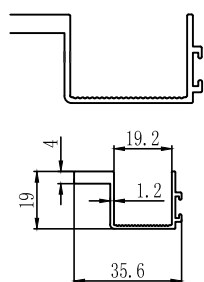
### SHUTTER DIVIDER FOR 25MM

Finish	Size	MRP
Rose Gold	3 Mtr.	1460
Matt Black	3 Mtr.	1210



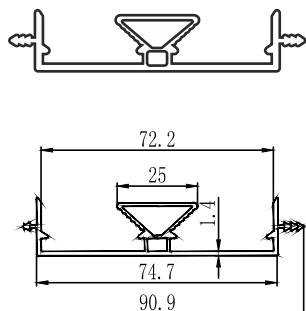
### L HANDLE FOR SLIDING WARDROBE 18MM

Finish	Size	MRP
Rose Gold	3 Mtr.	2145
Matt Black	3 Mtr.	1760



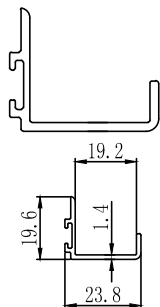
### L HANDLE FOR SLIDING WARDROBE 25MM

Finish	Size	MRP
Rose Gold	3 Mtr.	2290
Matt Black	3 Mtr.	1890



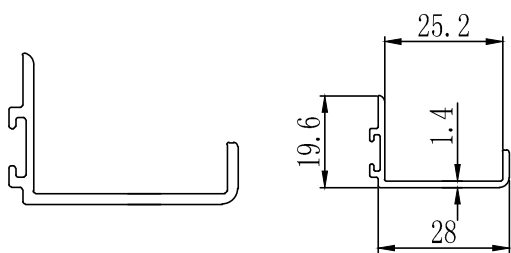
### WOODEN SHUTTER DIVIDER WITH HANDLE

Finish	Size	MRP
Rose Gold	3 Mtr.	4180
Matt Black	3 Mtr.	3800



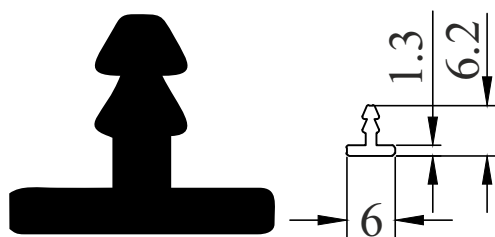
### U TYPE EDGE PROFILE FOR 18 MM DOOR

Finish	Size	MRP
Rose Gold	3 Mtr.	1248
Matt Black	3 Mtr.	1018



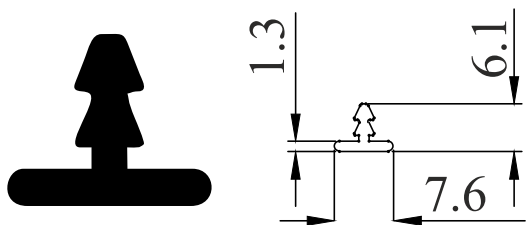
### U TYPE EDGE PROFILE FOR 25 MM DOOR

Finish	Size	MRP
Rose Gold	3 Mtr.	1375
Matt Black	3 Mtr.	1128



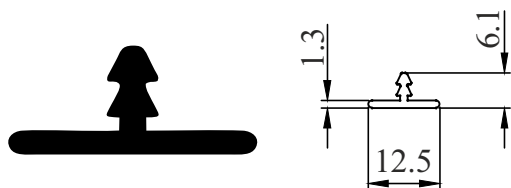
### ALUMINUM T PATTI 6MM

Finish	Size	MRP
Rose Gold	3 Mtr.	165
CP Glossy	3 Mtr.	133
Golden	3 Mtr.	177



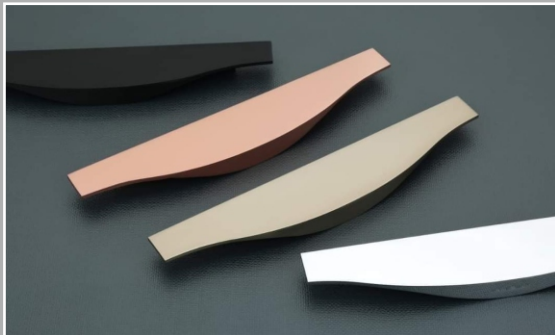
### ALUMINUM T PATTI 8MM

Finish	Size	MRP
Rose Gold	3 Mtr.	192
CP Glossy	3 Mtr.	163
Golden	3 Mtr.	207

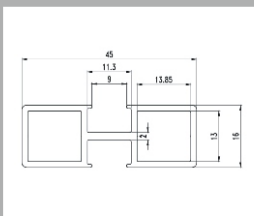


### ALUMINUM T PATTI 12MM

Finish	Size	MRP
Rose Gold	3 Mtr.	236
CP Glossy	3 Mtr.	177
Golden	3 Mtr.	236

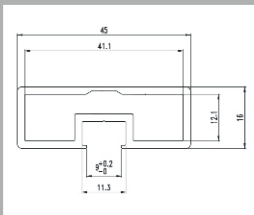


### SLIM PARTITION DIVIDER PROFILE



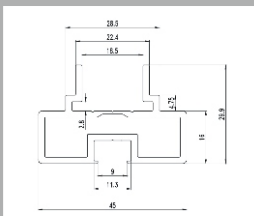
FINISH	SIZE	MRP
Rose Gold	3 Mtr.	3600
Matt Black	3 Mtr.	3600

### SLIM PARTITION & DOOR VERTICAL 45 x 16 mm PROFILE



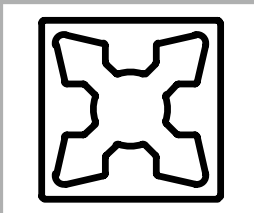
FINISH	SIZE	MRP
Rose Gold	3 Mtr.	5000
Matt Black	3 Mtr.	5000

### SLIM PARTITION HORIZONTAL 45 x 16,, PROFILE



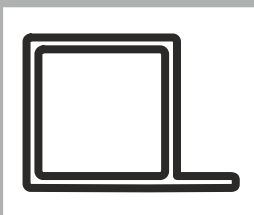
FINISH	SIZE	MRP
Rose Gold	3 Mtr.	5900
Matt Black	3 Mtr.	5900

### STUCKING PROFILE VERTICAL



FINISH	SIZE	MRP
Rose Gold	3 Mtr.	3350
Matt Black	3 Mtr.	3350

### STUCKING PROFILE FOR 18MM WOOD

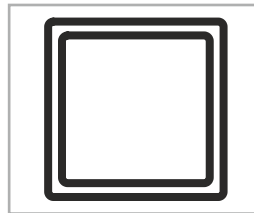


FINISH	SIZE	MRP
Rose Gold	3 Mtr.	1675
Matt Black	3 Mtr.	1675

### EDGE HANDLE

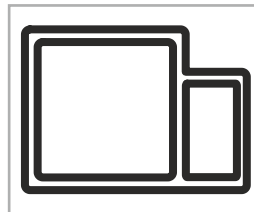
Finish	Size	MRP
Rose Gold	150mm, 200mm 250mm, 300mm	30/ inch
CP Glossy	350mm, 400mm, 450mm, 500mm, 550mm, 600mm,	
Black	700mm, 800mm, 900mm	

### STUCKING PROFILE HOLLOW



FINISH	SIZE	MRP
Rose Gold	3 Mtr.	1500
Matt Black	3 Mtr.	1500

### STUCKING PROFILE 4MM GLASS



FINISH	SIZE	MRP
Rose Gold	3 Mtr.	2075
Matt Black	3 Mtr.	2075

### STUCKING PROFILE CAP



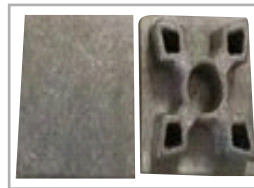
DESCRIPTION	MRP
Sticking Profile Cap	135

### STUCKING PROFILE CANECTOR



DESCRIPTION	MRP
Sticking Profile Canector	135

### STUCKING PROFILE CAP WITHOUT SCREW



DESCRIPTION	MRP
Sticking Profile Cap Without Screw	135

### STUCKING PROFILE SCREW



DESCRIPTION	MRP
Sticking Profile Screw	40



**KITCHEN | WARDROBE | BATHROOM**



PROFESIONAL QUALITY SERVICE SATISFACTION



**YOU CAN MAKE YOUR OWN BRAND WITH US.**

GET PRICE ADVANTAGE BUY DIRECTLY FROM IMPORTER  
BUY GOODS IN YOUR BRAND WITH US.

Imported & Marketed by :  
**SHREE RAM INTERNATIONALS**  
JAIPUR, RAJASTHAN (INDIA)

E-mail : [jaipurshreeram9052@gmail.com](mailto:jaipurshreeram9052@gmail.com)  
Website : [www.srhardwaregroup.com](http://www.srhardwaregroup.com)

MAP DIRECTION



JOIN US :



"SRINTERNATIONALS"